

Linearity curve of Cocaine from Oral fluid on a Strata-X-C and Knx 2.6um, XB-C!8 50x4.6 column

Column: Kinetex® 2.6 µm XB-C18 100 Å, LC Column 50 x 4.6 mm, Ea

Dimensions: 50 x 4.6 mm ID

Order No: 00B-4496-E0

Elution Type: Gradient

Eluent A: 0.1% Formic Acid in DI H₂O

Eluent B: 0.1% Formic Acid in ACN

Gradient Profile:	Step No.	Time (min)	Pct A	Pct B
	1	0	90	10
	2	3	60	40
	3	3.5	60	40
	4	3.51	90	10
	5	6	90	10

Flow Rate: 1000 µL/min

Col. Temp.: ambient

Detection: Tandem Mass Spec (MS-MS) @ (ambient)

Detector Info: Instrument: Agilent® 1260

MS/MS Instrument: <a target="_blank"

href="https://sciex.com/products/mass-spectrometers?utm_campaign=2019%20application%20search&utm_source=phenomenex&utm_medium=referral">SCIEX<

Analyst Note:

1ml human oral fluid was collected on cellulose pad of the
applicator tip provided by the Intercept® i2

oral fluid device (OFC) . Saturated pad was placed into
transport tube containing buffer solution and allowed to
sit overnight. Centrifuge at 600g for 15mins to collect
supernatant.

SPE cartridge: Strata-X-C, 30 mg 96-Well Plate

Part No. 8E-S029-TGB

Step Procedure

Condition: 1 mL Methanol

Equilibrate: 1 mL DI Water

Load: Combine 0.5mL of pretreated sample spiked with internal
standards and 1 mL 1% formic acid, mix/vortex 10-15 secs and
1 mL DI Water

Strong Wash: 1 mL 50:50 Acetone/Water

Dry Down: 5 minutes at maximum vacuum (15" Hg or higher)

Elute: 2 x 500 µL Methanol/Acetonitrile/30% Ammonium Hydroxide

Dry Down: (5:5:2)
Evaporate to dryness under gentle nitrogen and 45-50°C.

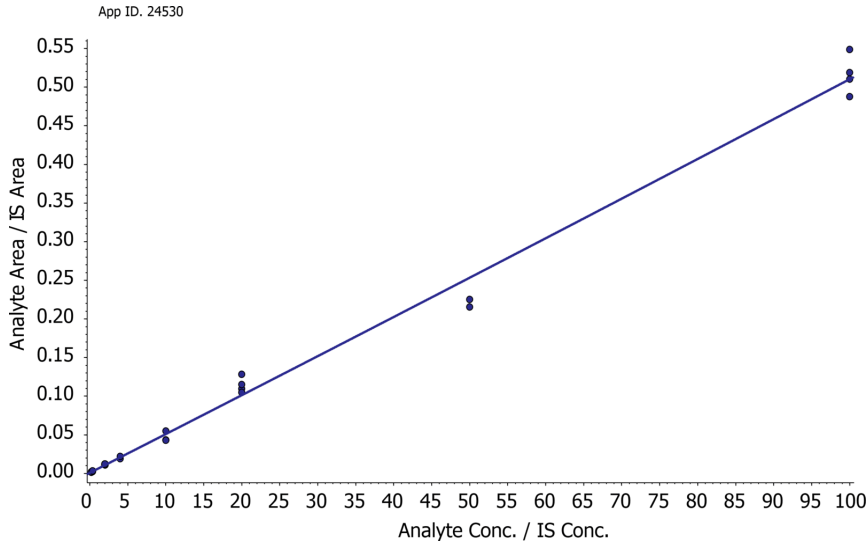
Reconstitute: 200 µL initial mobile phase



Products used in this application:



Linearity curve of Cocaine from Oral fluid on a Strata-X-C and Knx 2.6um, XB-C!8 50x4.6 column



ANALYTES:

1 Cocaine

Retention Time: 2.31 min

