

Nucleosides on Luna Omega 1.6u PS C18 100x2.1mm

Column: Luna Omega 1.6u PS C18 100A, LC Column 150 x 2.1 mm, Ea

Dimensions: 150 x 2.1 mm ID

Order No: 00F-4752-AN

Elution Type: Isocratic

Eluent A: Water with 5 mM Ammonium Phosphate (pH 5.3)

Eluent B: Methanol

Gradient Profile:	Step No.	Time (min)	Pct A	Pct B
	1	0	97	3

Flow Rate: 0.35 mL/min

Col. Temp.: 35 °C

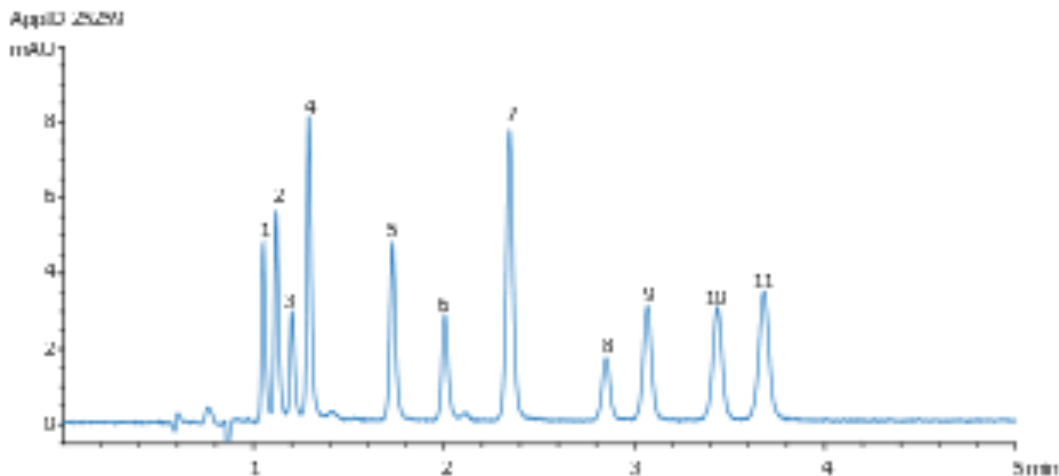
Detection: LC/UV (DAD, PDA) @ (ambient)

Analyst Note: Nucleosides mix from Sigma (#47310-U) Nucleosides mix from Sigma (#47310-U)

Injection: 2uL of 1:10 diluted Nucleosides mix



Products used in this application:



Nucleosides on Luna Omega 1.6u PS C18 100x2.1mm

ANALYTES:

- 1** Pseudouridine
- 2** 2-O-methylcytidine
- 3** 1-Methyladenosine
- 4** Cytidine
- 5** Uridine
- 6** Thiocytidine
- 7** 5-Methylcytidine
- 8** 3-Methylcytidine
- 9** Inosine
- 10** Guanosine
- 11** 5-Methyluridine (Ribothymidine)

