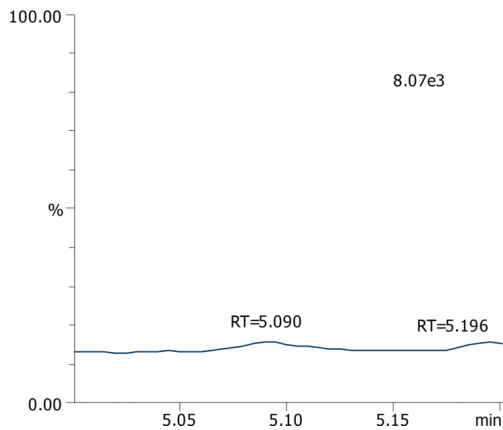
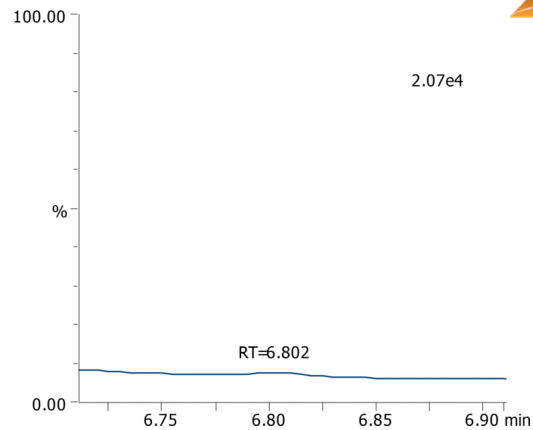


NDMA and NDEA by GC/MS on a ZB-624Plus**Column:** Zebron ZB-624plus, GC Cap. Column 30m x 0.25mm x 1.4µm, Ea**Phase:** Proprietary Pesticides Phase**Dimensions:** 30 meters x 0.25 mm x 1.4 µm**Order No:** 7HG-G040-27**Oven Profile:** 60°C for 1 min to 240°C @ 20°C/min 240°C for 1 min**Carrier Gas:** Constant Flow Helium, 36.1 cm/sec**Injection:** Split 10:1 1 µL @ 150°C**Detection:** GC/MS (250°C)**Analyst Note:** Pharmaceutical API API is dissolved in 1 mL of DMSO in a 20 mL headspace vial.**Products used in this application:**

Q 74.00 (+)



Q 102.00 (+)

**ANALYTES:**

- 1 NDMA
Retention Time: 5.094 min
- 2 NDEA
Retention Time: 6.808 min

