

## Lux 5 $\mu$ i-Amylose-3 Strong Solvent Stability: trans-Stilbene Oxide

**Column:** Lux<sup>®</sup> 5  $\mu$ m i-Amylose-3, LC Column 250 x 4.6 mm, Ea

**Dimensions:** 250 x 4.6 mm ID

**Order No:** 00G-4779-E0

**Elution Type:** Isocratic

**Eluent A:** Hexane

**Eluent B:** Isopropanol

**Eluent C:** Diethylamine

Gradient Profile:	Step No.	Time (min)	Pct A	Pct B	Pct C
1	1	15	80	20	0.1

**Flow Rate:** 0.5 mL/min

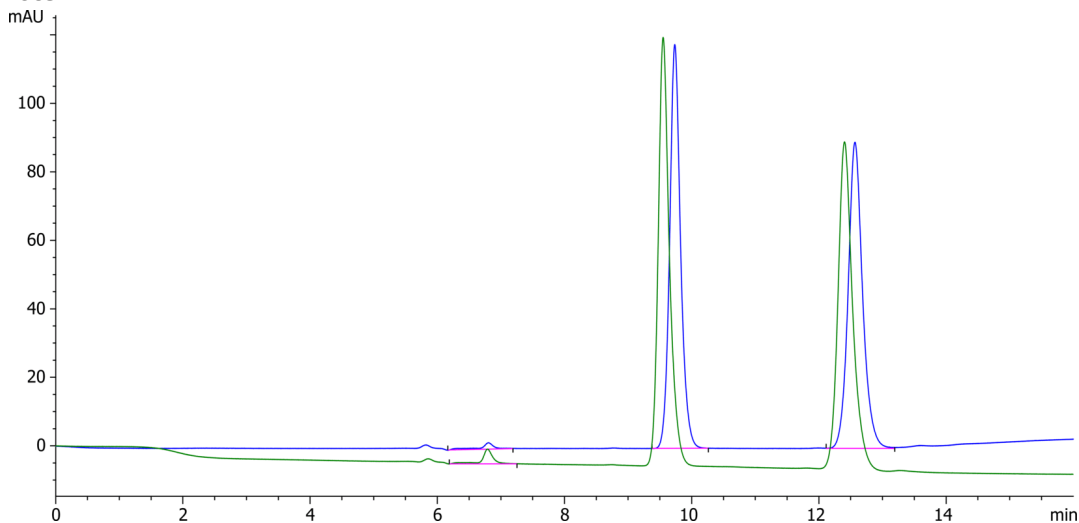
**Col. Temp.:** 25 °C

**Detection:** LC/UV (DAD, PDA) @ 220.000000000 nm (nanometers) (ambient)

**Analyst Note:** 2 mg/mL in Ethanol. Injections before (1st chromatogram) and after (2nd chromatogram) column was flushed with DCM and then THF.



Products used in this application:



### ANALYTES:

**1** trans-Stilbene Oxide

Retention Time: 9.733 min

**2** trans-Stilbene Oxide

Retention Time: 12.566 min

