

## Rapid Sample Extraction of Chloroquine, Hydroxychloroquine, and Desethylchloroquine from Serum for LC-MS/MS

**Column:** Kinetex® F5 2.6µm 100 Å, LC Column 50 x 2.1 mm, Ea

**Dimensions:** 50 x 2.1 mm ID

**Order No:** 00B-4723-AN

**Elution Type:** Gradient

**Eluent A:** 0.1 % Formic acid in water

**Eluent B:** Methanol

Gradient Profile:	Step No.	Time (min)	Pct A	Pct B
	1	0	98	2
	2	2	93	7
	3	3	85	15
	4	3.2	60	40
	5	4.2	5	95
	6	6	98	2

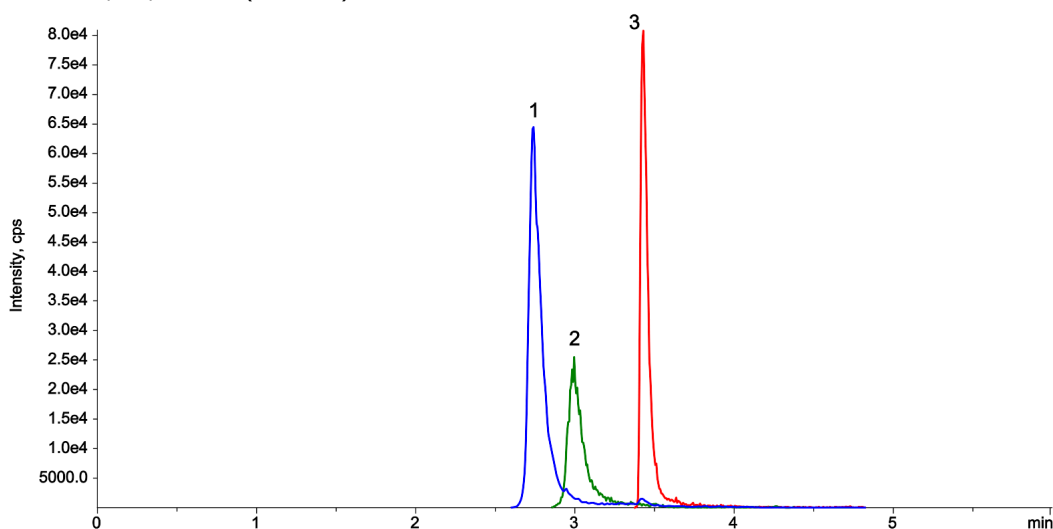
**Flow Rate:** 0.5 mL/min

**Col. Temp.:** 20 °C

**Detection:** LC/MS/MS @ (ambient)



Products used in this application:



### ANALYTES:

- 1 Desethylchloroquine
- 2 Hydroxychloroquine
- 3 Chloroquine



# Sample Preparation Details

for HPLC Application ID No.: 25942

## Rapid Sample Extraction of Chloroquine, Hydroxychloroquine, and Desethylchloroquine from Serum for LC-MS/MS

### PRODUCT DESCRIPTION:

Impact™ Protein Precipitation, 2mL Square Well Filter Plate, 2/Pk

Order No.: CE0-7565

### SOLID PHASE EXTRACTION (SPE) PROCEDURE:

**Note:** The solvent volumes shown below are for a bed mass.

The solvent volumes will need to be adjusted for a smaller or larger bed mass.

#### Condition:

#### Load:

#### Wash:

#### Dry:

#### Elute:

#### Final Prep and Analysis:

Inject: 10 µL on HPLC LC/MS/MS @ (ambient)

ANALYTES:	Spiked Conc. (ng/mL)	Log P	pKa	% Rec	%RSC (n=0)
1 Desethylchloroquine	0				
2 Hydroxychloroquine	0				
3 Chloroquine	0				

**Note:** This method is designed as a convenient starting point for further investigation and can be tailored to meet your extraction goals.  
Call your local Phenomenex Representative for assistance in method development and optimization techniques.

©2025 Phenomenex Inc. All rights reserved.

For more information contact your Phenomenex Representative at [info@phenomenex.com](mailto:info@phenomenex.com)



Phenomenex products are available worldwide.

[www.phenomenex.com.cn](http://www.phenomenex.com.cn)

[info@phenomenex.com](mailto:info@phenomenex.com)